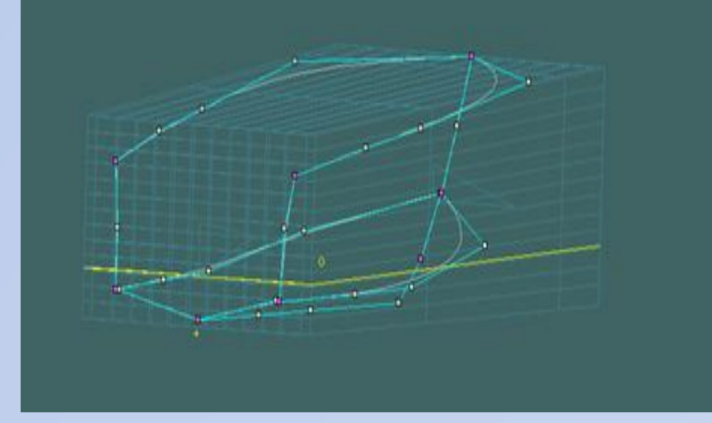
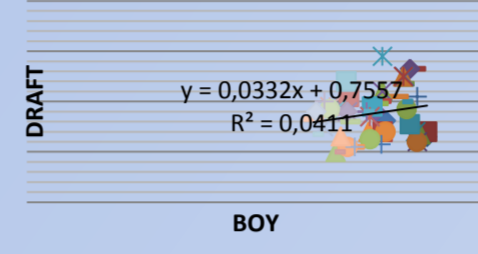
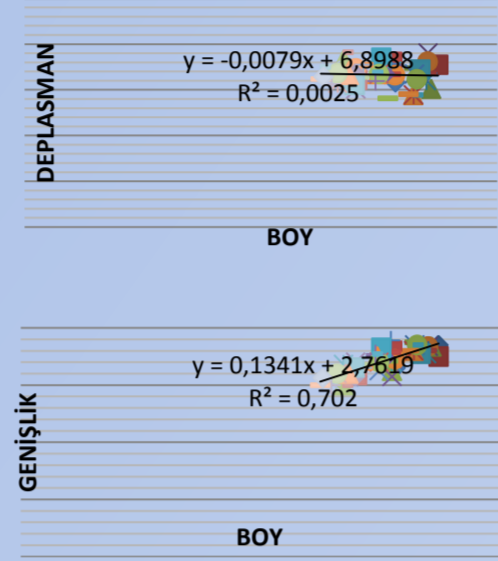


YILDIZ TEKNİK ÜNİVERSİTESİ GEMİ İNŞAATI VE DENİZCİLİK FAKÜLTESİ GEMİ İNŞAATI VE GEMİ MAKİNALARI MÜHENDİSLİĞİ BÖLÜMÜ BİTİRME TEZİ

TEZ DANIŞMANI: Prof. Dr. Hüseyin YILMAZ
Serdar Gani FINDIK-Volkan SAYDAN
07063013-07063040

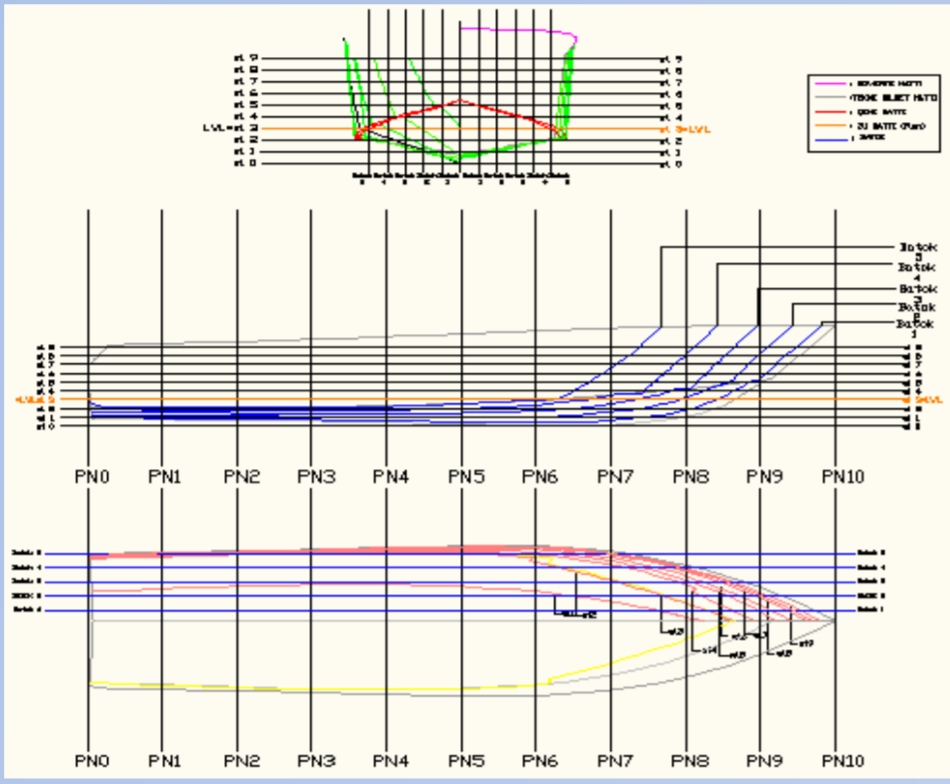
1) Ön DİZAYN

- ✓ 30 METRE BOYUNDA
- ✓ KOMPOZİT MALZEME
- ✓ KAYICI MOTORYAT
- ✓ TOPLAM YOLCU SAYISI

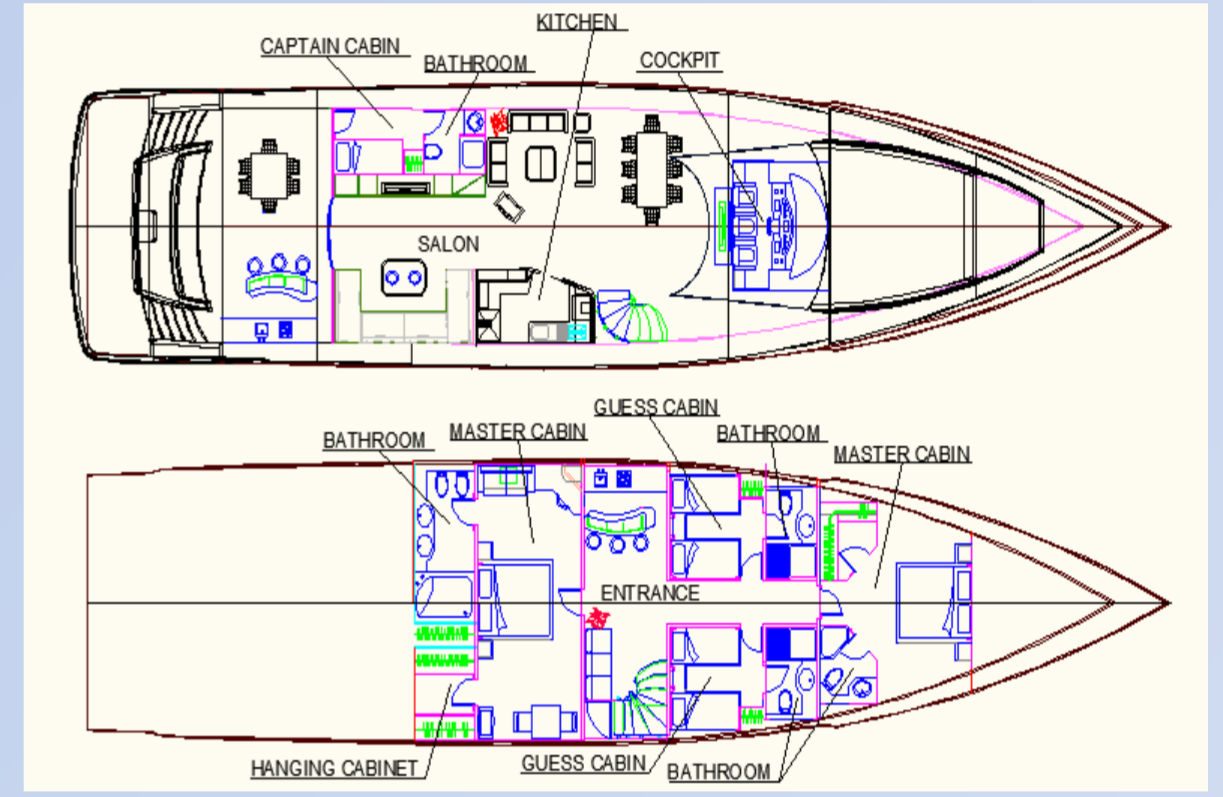
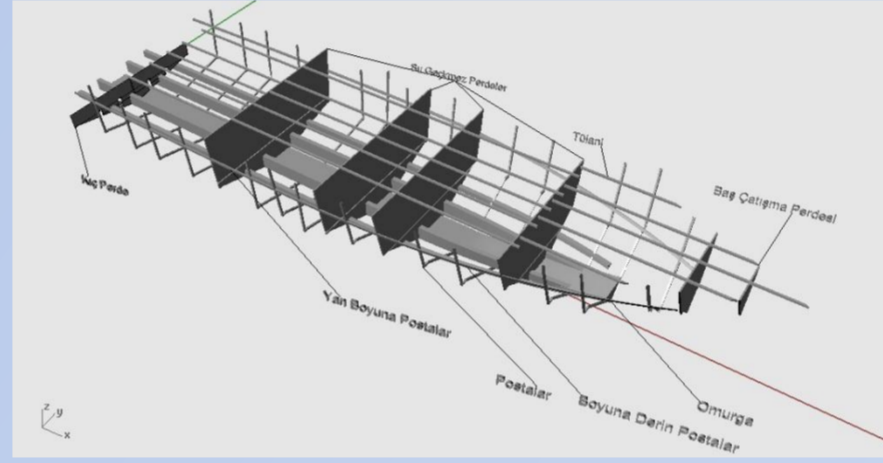


ANA BOYUTLAR	
L	30m
Lwl	25,95
Bmax	7
Bwl	6,69
T	1,225
D	4,5
Δ	92
CB	0,481

2) Form DİZAYN



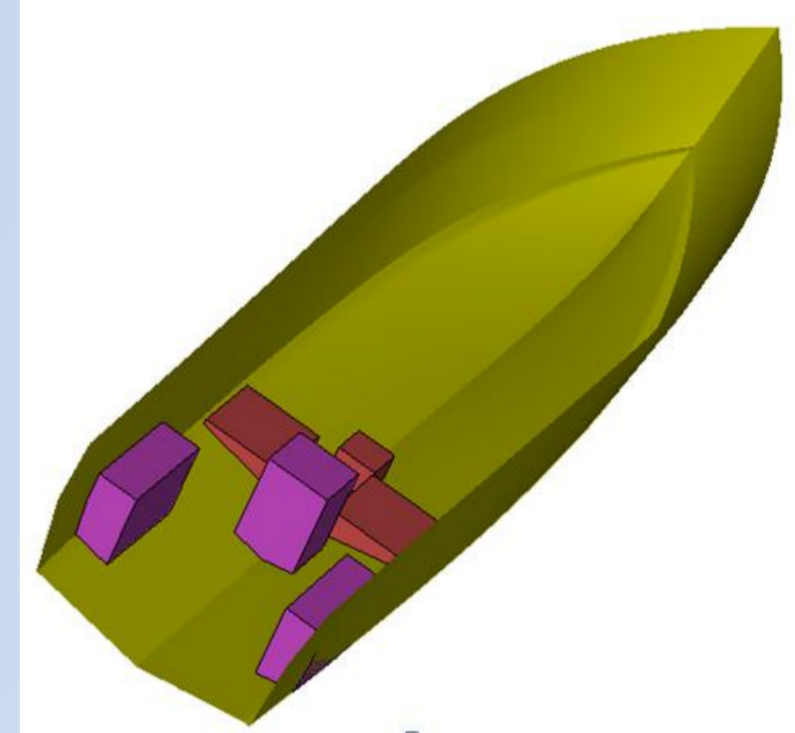
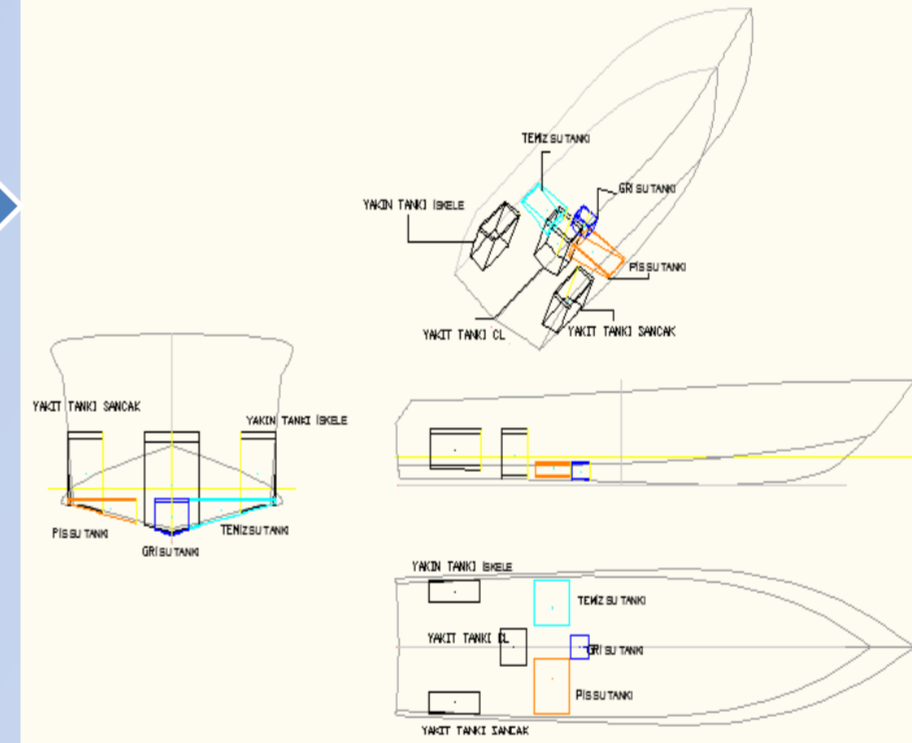
KAT YERLEŞİMİ



3) Ağırlık Hesabı

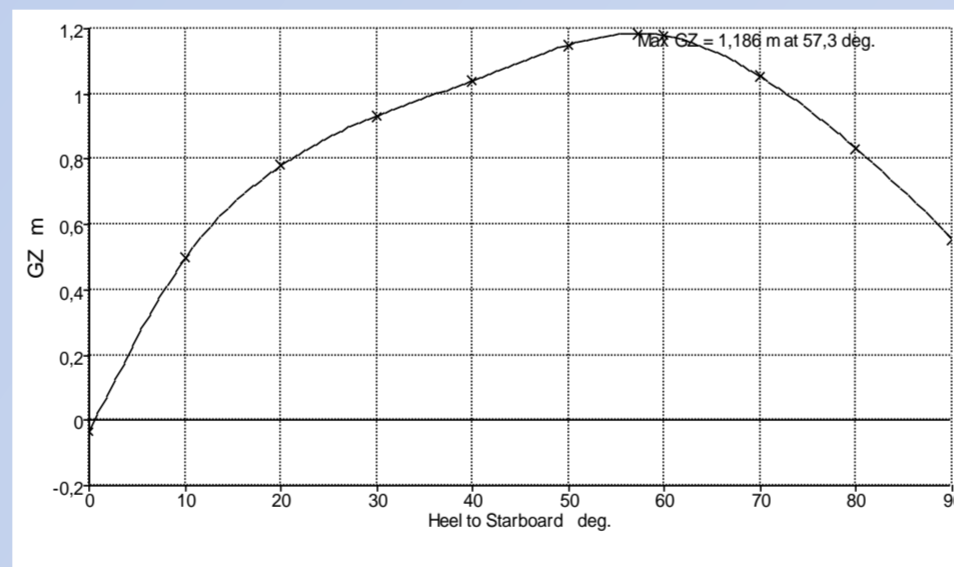
	AGIRLIK	LCG	VCG	TCG	LCG*A	VCG*A	TCG*A
BOŞ TEKNE	53,78	13,442	2,76	0,00	722,99	148,66	0,00
TOPLAM EŞYA	10,60	14,252	2,61	0,07	151,07	27,69	0,79
MAKİNE	14,13	7,1883	1,86	0,00	101,57	26,34	0,00
TANK	14,07	6,1177	0,02	0,40	86,089	0,35	5,68
TOPLAM	92,59 t.	11,46*	2,19	0,07	1061,7	203,04	6,47
	DEPLASMAN	LCG	VCG	TCG			

TANK YERLEŞİMİ

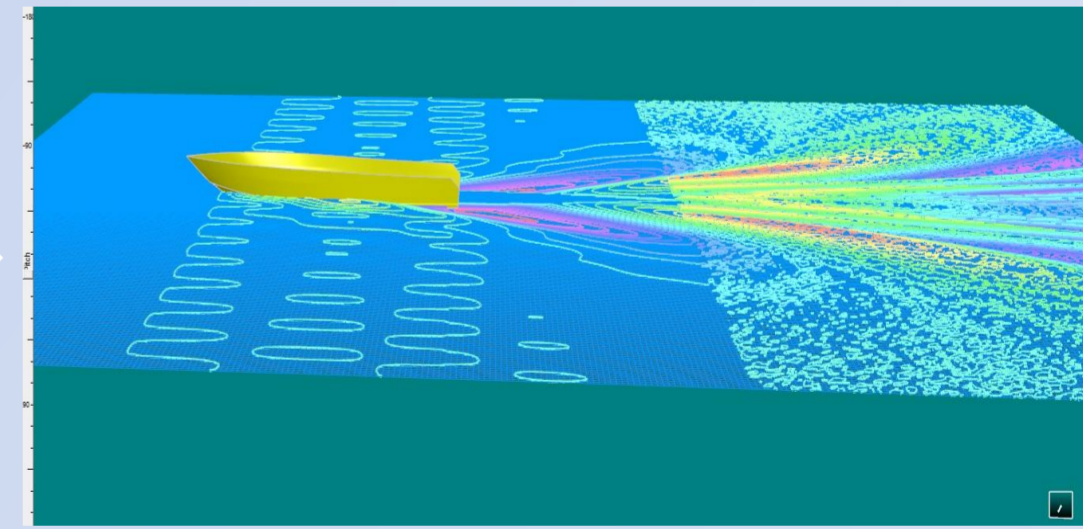


4) Hidrostatik Hesaplar

Draft Amidships m	1,254
Displacement t	90,63
Heel deg	0,6
Draft at FP m	1,280
Draft at AP m	1,229
Draft at LCF m	1,251
Trim (ave by stern) m	-0,051
WL Length m	25,965
Beam max extents on WL m	6,420
Wetted Area m ²	158,812
Waterpl. Area m ²	136,277
Prismatic coeff. (Cp)	0,770
Block coeff. (Cb)	0,420
Max Sect. area coeff. (Cm)	0,628
Waterpl. area coeff. (Cwp)	0,818
LCB from zero pt. (+ve fwd) m	11,149
LCF from zero pt. (+ve fwd) m	11,392
KB m	0,872
KG fluid m	2,040
BMt m	4,494
BML m	64,982
GMt corrected m	3,327
GML m	63,814
KMt m	5,366
KML m	65,854
Immersion (TPC) tonne/cm	1,397
MTC tonne.m	2,234
RM at 1deg = GMt.Disp.sin(1) tonne.m	5,261
Max deck inclination deg	0,5725
Trim angle (+ve by stern) deg	-0,1120



DALGA PROFİLİ



5) SONUÇ

